

# *Old Pueblo A*

## *June 2020*



# *Tucson Chapter*

## **Model A Ford Club of America**



# OLD PUEBLO A



Official Monthly Publication  
Tucson Chapter, Model A Ford Club of America  
7060 E. 21st Street, Tucson, AZ 85710  
[www.tucsonmodelafordclub.org](http://www.tucsonmodelafordclub.org)

## ADVERTISING RATES:

Cover Ads.....\$20.00/year

### EDITOR:

David Rivard

PO Box 249

Vail, AZ 85641

520-428-4929

[modeladude@outlook.com](mailto:modeladude@outlook.com)

## TUCSON CHAPTER DUES:

\$15/year family or

\$10/year individual

### MEETINGS:

Regular meetings are held on the first Tuesday of each month (except December) at 7:30 PM.

Jim Click Ford

6244 E. 22nd Street

Tucson, AZ 85711

### MONTHLY OUTING:

Fourth Sunday of the month or as voted by the club membership

The Tucson Model A Club is a local chapter of MAFCA:

Model A Ford Club of America, Inc.

250 S. Cypress Street

La Habra, CA 90631

562-697-2712

Toll free (for orders only, including MAFCA membership):

866-379-3619

[www.mafca.com](http://www.mafca.com)

## 2020 OFFICERS

### President:

David Ramsower

[ramsworth@gmail.com](mailto:ramsworth@gmail.com)

520-661-4493

### 1st Vice President:

Sindy Osterman

[scubamngirl51@gmail.com](mailto:scubamngirl51@gmail.com)

651-338-3390

### 2nd Vice President:

Rey Brown

[softtopcoupe@yahoo.com](mailto:softtopcoupe@yahoo.com)

520-296-2079

### Treasurer:

Mike Liebert

[hikingmike@aol.com](mailto:hikingmike@aol.com)

520-529-8662

### Secretary:

Frank Pyrdeck

[frankpyrdeck@aol.com](mailto:frankpyrdeck@aol.com)

520-870-9017

## 2020 BOARD OF DIRECTORS

Chuck Thim

Ray Feierstein

Dan Jensen

Tom McWilliams

Ernie Williams

Joe Findysz

# Celebrities and Their Model A's

The MAFCA webmaster has created a page on the MAFCA website showing celebrities with their Model A's from submissions by MAFCA members. Here are some of the contributions. You can also view the latest version of the page at [https://www.mafca.com/gallery\\_celebrities.html](https://www.mafca.com/gallery_celebrities.html).

## **Doris Day - Actress**

Doris was given this 1930 De Luxe Roadster by a fan in the 1980s and had it restored. She was often seen driving around Carmel California. Doris passed in 2019 and the car was auctioned off.



## **FDR**

The President and his family posing with a 1928 Phaeton.

## **Sent in by Alan Dalmaso**

Posted 03/15/20



## **Hubert H Humphrey**

**Posing with Model A Tudor Sedan.**

Posted 03/14/20



# Celebrities and Their Model A's

## Actress Joan Crawford

Posed with her 1928 Town Car.

Image courtesy of  
[www.mptvimages.com](http://www.mptvimages.com)  
03/12/20



## Andy Griffith

The actor was also an avid collector of automobiles, including a couple of Model A's. He was also a MAFCA member! Pictured here with his TV co-star **Don Knotts**.

Posted 02/10/20



**Jerry Lewis** with his 1931 SW Town Sedan in 1961.

The car was restored in Burbank by "Tiny" Snell and was sold in the early 1960s. Its whereabouts are unknown.

Posted by Rick Black  
03/12/20



## Mary Pickford

Another shot of the actress with one of the first 1928 Model A's, a Sport Coupe. Note open ended front bumper!

Posted 03/14/20



# Celebrities and Their Model A's

**Nelson Rockefeller** and friends in a 1931 Phaeton.

Rockefeller was the governor of New York from 1953-1973 and Vice President of the US from 1974-1977

Sent in by **Luis Ariza**  
Posted 03/10/20



**Tennessee Ernie Ford**

Standing beside his 1930 De Luxe Phaeton in 1956.

Image courtesy of  
[www.mptvimages.com](http://www.mptvimages.com)  
03/12/20



**John Fitzgerald Kennedy**

With his friends in South Carolina in 1942.

Sent in by **Luis Ariza**  
Posted 03/09/20



This photograph, courtesy of the John Fitzgerald Kennedy library & Presidential Museum

**Colonel Harlan Sanders**

Posing with his 1930/31 Coupe in 1955

Sent in by **Justin Bicknell**

Posted 03/03/20



Colonel Sanders, circa 1955

# Celebrities and Their Model A's

## Cecil B DeMille

The movie producer with his foot on the running board of his 1928 Tudor Sedan.

Sent in by Alan Dalmaso

Posted 02/28/20



## John D. Rockefeller

Seems like it didn't make any difference if you were rich - everyone loved the New Ford

Sent in by Alan Dalmaso

Posted 02/28/20

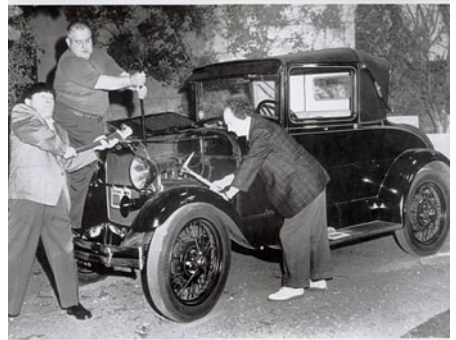


## The Three Stooges

They didn't own a Model A that we know of, but they repaired one in a movie.

Sent in by Alan Dalmaso

Posted 02/28/20



## Thomas Edison

His 1928 Tudor was a gift from Henry Ford

Posted 02/10/20



1928 Ford, Serial# 1  
Given by Henry Ford to his good friend Thomas Edison

# EVENTS CALENDAR

Due to the current pandemic and associated social distancing requirements, our club outings and monthly general meetings have been temporarily suspended. We will resume our usual club activities as soon as the public health situation permits. Evaluation is being done on a month-by-month basis. As of this month, all planned activities for June and July have officially been canceled.

Meanwhile, our monthly newsletter (the one you're reading now) will continue as usual with Model A articles, news and items of general interest to Model A club members.

Club announcements will appear in the newsletter and be sent out via email to all club members who have provided their email address. If you're not already receiving club announcements from Ray Feierstein via email and want to be included, please email Ray at [sanrays@msn.com](mailto:sanrays@msn.com) and ask to be added to the list.

## MAFCA NEWS

**MAFCA Office Opens for Phone Calls** — Effective Tuesday, May 26, 2020 the MAFCA office will be answering phone calls from 10:00 AM to 2:00 PM Pacific Time. If you have questions or would like to place an order for MAFCA merchandise you may contact us during those hours. Of course, you may leave a voice mail message at any time and we will return your call as soon as possible, always within one business day. Our website at [mafca.com](http://mafca.com) is still accepting orders as well. We look forward to serving you.

**Follow-up — Wilcox AA Truck** — Back in the March/April 2020 issue of *The Restorer* magazine, there was a story about David Wilcox and his 1929 AA Truck. After a flood at his home in Louisiana, the truck was almost totally under water. But with the help of his friend George Corse, they nursed the old truck back to life, and it is now drivable once again.



# June



- Jun 3 – Jerry Ashcraft
- Jun 7 – Laura Mohr
- Jun 8 – Shorty Allison
- Jun 12 – Sarah Miller
- Jun 14 – Hal Abel
- Jun 14 – Laura Roberts
- Jun 15 – Dan Jensen
- Jun 17 – Mike Bellon
- Jun 20 – Richard Mauthe
- Jun 21 – Marianne Elvick
- Jun 22 – Fritz Mietzner
- Jun 23 – Rose Saxwold
- Jun 23 – Frances Kunz
- Jun 24 – Dan Osterman
- Jun 27 – Ernie Williams
- Jun 28 – Dan Carlson
- Jun 30 – Jane Held

## *NEXT MEETING:*

To be scheduled as soon as public health conditions permit. See page 7 for more information.



Ray Olson  
Tucson  
1930 Coupe



## *Happy Anniversary*



- Jun 5 – Jack & Iola Strohlein
- Jun 8 – Jeff & Candi Eppley
- Jun 15 – Gary & Laura Roberts
- Jun 18 – Shorty & Isabel Allison
- Jun 27 – Ernie & Ann Williams





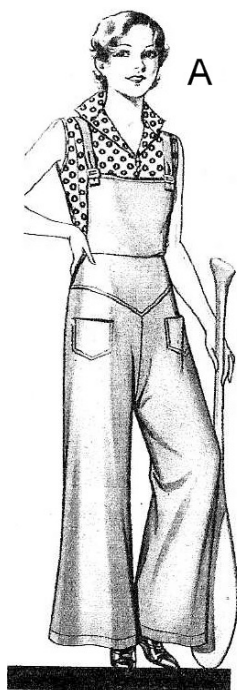
# Play the Game or Watch it Smartly

By Patti Jones

(Taken from National Bellas Hess Spring/Summer 1931)

While looking up something new in fashions for my article, I came across the following interesting fashion items:

- (A) Cotton linen overalls were the vogue at the beach. You could wear them over your bathing suit, but it was noted that wise housewives and artists were beginning to discover their versatility and found them more convenient than smocks.
- (B) Riding breeches were made of either khaki cotton twill, tan or grey cotton whipcord (like the Model A Bedford cord upholstery) or tan corduroy. This polo shirt could be purchased either in tan, white, or blue broadcloth. Note that women's breeches buttoned on each side of the hips, versus a man's at the crotch.



**A**  
**Cotton Linene Overall and  
 Cotton Pongette Blouse**  
 6W3480—Blue.  
 6W3491—Tan.  
 6W3482—White.  
**\$1.19**



**B**  
**Cotton Broadcloth or  
 Khaki**  
**95¢**  
**→**  
**Khaki  
 Cotton  
 Twill**  
**\$1.59**  
**Smart Riding Breeches**  
 6W3465—Khaki Cotton Twill \$1.59  
 6W3470—Tan Cotton Whip  
 cord.....\$2.81

# Play the Game or Watch it Smartly

- (C) This cotton velveteen jacket can be worn to any sports event with a dress or skirt. It is double breasted and has a notched collar, two patch pockets, and a flower on the lapel.
- (D) Four styles of all wool worsted swim suits; the one on the left is a California style plain suit. The middle suit is a two-piece model with a white belt, and the right one is a one-piece with appliqué. The suit above was offered at public pools, and was considered for both men and women.
- (E) These sailor pants were almost identical to the overalls except for the bib. They were the rage for this summer's costume. They're great for any sport, and made from cotton twill. Note the fitted yoke and wide legs for easy comfort.
- (F) Sports knickers are still the rage for hiking or country wear. They could be purchased in grey cotton tweed, grey or tan wool/cotton tweed, grey or tan all-wool tweed, black or brown check linen, or white and tan plain linen. Note the side buttons for women's knickers.



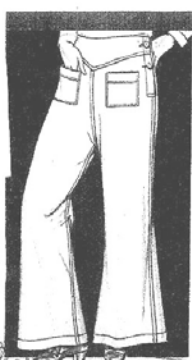
**Lustrous Pile Velveteen**  
A lustrous pile Cotton Velveteen Jacket like this makes a stunning Sports Coat. Turns worn over a silk dress or skirt. Double-breasted. Has braided-bound notched collar, two patch pockets and flower on lapel.  
**4.48**  
6W3425—Black. Women's and Misses' Sizes: to fit 32 to 38 bust. Be sure to give size.



Approved Worsteds \$1.69 EACH UP  
Worsted \$3.45 EACH UP  
THREE SWIM-BACK STYLES  
\$1.69 EACH UP  
MEN'S SPEED MODEL



**Cotton Twill . . . 98¢**  
**Sailor Pants**  
6W3490—White.  
Heave Ho, my leauge! The smart debutantes are taken to wearing Sailor Pants and they are an important part of the summer costume on beach and sports wear. They're great for active sets. You can find this very same model in any size shop but not for this price. These are made sturdy Cotton Twill which washes easily and is so smartly tailored. Note the fitted legs and belted yoke. Patch pockets.  
Sizes: 10 to 10 years. Be sure to give size.



**98¢**  
**Sports Knickers**  
6W3290—Grey Cotton Tweed. . . . . 98¢  
6W3300—Grey or Tan Wool-and-Cotton Tweed. Give size and color. . . . . \$1.96  
6W3305—Grey or Tan All-Wool Tweed. . . . . \$2.90  
6W3310—Black or Brown Check Linen. . . . . \$1.90  
6W3315—White or Tan Plain Linen. . . . . \$1.90  
For hiking or country wear. Knickers are the thing! Tailored to the feminine figure accurately, this is a favorite style. Generously wide. Adjustable belt. Women's and Misses' Sizes: to fit 26 to 36 waist

NATIONAL BELLAZ HESS CO. INC. New York and Kansas City, Missouri

# Ignition Timing

by Les Andrews, 1998

Here's the procedure I use to set timing. It works every time for me and a way to insure you have set the timing correctly every time.

1. Set the points to .020.
2. Check the clearance between the distributor rotor and each of the four contacts inside the distributor body. You can carefully bend the rotor tab or file each of the body contacts to get .025 to .030 clearance between the rotor and each contact.
3. Set the timing pin in the timing gear cover to the detent. Remove #1 spark plug and look down the hole to make sure #1 piston at the very top of the stroke. (make sure you are observing the piston and not the valve).
4. Set the steering column spark lever full up position (full retard). With the distributor body in place, make sure the distributor plate arm is fully against the far end of the body opening. Then pull the spark lever full down and check to see that the distributor arm is fully against the other side of the body opening. This checks to see that you are getting a full 20 degrees of advance. Now reset the spark lever full up.
5. From the right side of the engine, the rotor should be pointing to about 5 o'clock position. Loosen the distributor cam screw and rotate the distributor cam clockwise to the point just before the points open on the lobe. Tighten the cam screw down.
6. With the cam screw tight, try to move the cam clockwise again, i.e., remove all backlash movement. The points should be at a position just before the points open.
7. Here is the final check. Attach a light or volt meter leads to the tip of the points arm. I made up a test light from a tail light socket with alligator clips on both pigtail wires. Clip one alligator clip to a good ground point and the other clip to the end of the point arm. When the points are closed the light is off, when the points open the light comes on.
8. Turn the ignition key on. The test light should be off. Now slowly pull the spark lever down and count the number of detents the spark lever arm passes before the test light comes on. The idea is to adjust the points so they open (light on) as the spark lever on the steering column passes the first or second detent on the column. You may have to adjust the distributor cam several times to get this adjustment. The car should start easily with the spark lever in full up position.

(continued on next page)

## Ignition Timing

With this setting, drive the car with the spark lever set about two notches from the bottom position. At 50 mph on the highway, move the spark lever to full down position for full 20 degrees advance.

If the starter is turning over slowly, it will help to improve the ground connection from the battery to the starter.

This is done by adding another battery cable from where the braided battery strap connects to the frame cross member, and connect the other end to one of the bell housing bolts just behind the starter motor. You will need a GM battery cable about 30" long. This will provide a better ground connection for the starter and sometimes allow it to turn faster.

-- Les Andrews, Technical Director, 1998

## Tucson in the 1930's



Broadway Road underpass construction in Tucson, ca. 1930s.

*Arizona Historical Society*

# Model A Calendar

The MARC Nickle A Region Model A Club was set to host the June MARC National Meet before the COVID-19 pandemic hit. The ladies of the club put together an 18-month calendar with Model A's, their pictures and sassy by-lines. The calendars start in July 2020 and run 18 months (through December 2021).



Being calendars, they are dated and the club will not be able to sell them in 2021 when they hope to be able to host the rescheduled national meet. Please consider purchasing one or more of their calendars to help their club. See ordering info below. Checks should be make out to the Nickle A Model A Club (yes, it's really Nickle, not Nickel).



## Help A Member Department

New member Ray Schmitt is looking for some assistance from club members with wiring his speedster. Since our club meetings are temporarily suspended, an announcement in the newsletter seemed like a good way to contact other members who might be able to help him. He's looking for information on what wire gauge would be appropriate for 6 V wiring (14, 12, 10, or ??).

Also, front brake drums wanted for a '29 Ford, perhaps someone has upgraded to new and the old ones still have some life in them? Please call 585-329-7840 and leave a message. I live here in Tucson I could pick them up.

Ray Schmitt

## Thank you to Our 2020 Club Sponsors

Jim Click Ford

Shorty & Isabel Allison

Mike & Ann Liebert

Scott & Cathy Parsons

Chuck & Lynn Thim

Elizabeth McCoy



CONSTRUCTION CO., INC.  
CONTRACTOR LIC. #072149

Cellular Phone  
(520) 982-8965

Email  
Sapcon@aol.com

"SHORTY"  
LELAND ALLISON  
President

Phone: (520) 747-4934  
Fax: (520) 571-8688  
3731 S. Chrysler Avenue  
P.O. Box 27106  
Tucson, AZ 85726-7106



Ace Hardware Stores Inc.

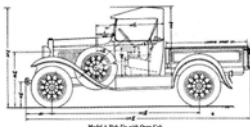
6959 E. 22nd St.  
Tucson, AZ 85710  
PHONE: (520) 747-9473  
CELL: (520) 954-0372  
FAX: (520) 747-1290  
EMAIL: joe@135hardware.com

JOSEPH T. FINDYSZ  
President

*Cooldest Hardware Store on the Planet 2016*

### Old Cars R&R

Repair, Restoration, and Maintenance  
Rich Whalen



520-203-1784  
richwhalen@live.com

11863 N Centaurus Pl  
Tucson, AZ 85737



Tucson's Most Reliable & Complete Independent Repair Facility.  
Nissan, Honda & Toyota Mechanics.

Andy Neal Jr.

Servicing  
Nissan, Honda, Toyota

Model T's and Model A's

560 E. Fort Lowell Rd. • (520) 622-3315

## LEVER SHOCKS REBUILT BRAKES SLEEVED AND REBUILT

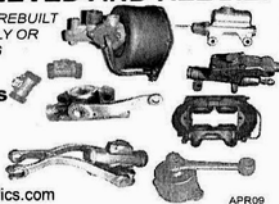
EXCHANGE OR YOURS REBUILT  
BRAKES: SLEEAVING ONLY OR  
COMPLETE REBUILDING  
FAST SERVICE

### Apple Hydraulics

1610 Middle Road  
Calverton, NY 11933

1-800-882-7753  
(631)369-9515

<http://www.AppleHydraulics.com>



APR09

## M M MITCHELL MANUFACTURING



Steve & Cyndi Mitchell

Mitchell MFG.  
530-458-4500 800-859-2088  
[www.mitchelloverdrivemfg.com](http://www.mitchelloverdrivemfg.com)

MODEL A FORD  
SYNCHRONIZED-TRANSMISSION FORD OVERDRIVES/UNDERDRIVES  
VINTAGE CAR OVERDRIVES 1928-1948

P.O. Box 925 1157 Parker St. Colusa, CA 95932

## ARIES MUFFLERS & PARTS

ORIGINAL MODEL A FORD EXHAUST SYSTEMS  
MADE PRECISELY TO THE FORD DESIGN

ALSO STATION WAGON TAIL PIPES AND  
FORDSON TRACTOR MUFFLERS(1917-1936)

AMUFFLER.COM JDAVIS@AMUFFLER.COM  
650.279.6609

## CLING'S

Send \$15.00 for booklet on  
How to Prepare 1939-1948  
Hydraulic Backing Plates

AFTERMARKET PRODUCTS, INC.

Specializing In Hydraulic Brakes for Model A's  
Serpentine Pulley System for Model A & B  
V8 Transmission Adapter (for L & R Hand Drive)

12452 S. 71st St. • Tempe, AZ 85284-3108  
(480) 777-1202 • Email: [dcmcl202@cox.net](mailto:dcmcl202@cox.net)  
[www.clingsaftermarket.com](http://www.clingsaftermarket.com)

The World's Largest Selection of 1909-31 Ford Parts

## Snyder's ANTIQUE AUTO PARTS

12925 Woodworth Rd. • New Springfield, OH 44443

Toll Free Ordering (888) 262-5712

or FAX (888) 262-5713

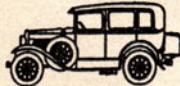
Order On-Line @ [www.snydersantiqueauto.com](http://www.snydersantiqueauto.com)

FREE Fully Illustrated CATALOG  
\$10.00 outside the U.S., Canada, & Mexico



## ARIZONA MODEL A, L.L.C.

- NEW PARTS
- USED PARTS
- SERVICE
- RESTORATION
- HOUR: TUES-FRI 9-12, 1-5  
SAT & EVES BY APPOINTMENT



SAMUEL P. GUTHRIE

15838 S. GILBERT RD., CHANDLER, AZ 85225  
(480) 782-0266

## BRATTON'S ANTIQUE AUTO PARTS

1606 Back Acre Circle  
Mount Airy, MD 21771

800-255-1929 Phone  
[www.brattons.com](http://www.brattons.com)

800-774-1930 Fax



JAY BEES  
Auto Services



Jacqui Harry  
Owner

790-6035

M-F 8am-5pm

5070 E. 22nd St. • Tucson, AZ 85711  
[www.jaybeesautoservice.com](http://www.jaybeesautoservice.com)

Mike's "A" Ford-able Parts

## Mike Butcher



124 Model A Drive, Maysville, GA 30558

email: [mike@mikes-afordable.com](mailto:mike@mikes-afordable.com) - [www.mikes-afordable.com](http://www.mikes-afordable.com)

Fax: 706 652 2492 - Phone: 706 652 3866

1 888 TRY MIKE (879 6453)



Specialising in 1928 - 1931 Model A Ford Parts

## RUSTY LUGS

SPECIALIZING IN MODEL A'S

Amanda Uthe  
Owner



360-887-3346

[Rustylugparts@gmail.com](mailto:Rustylugparts@gmail.com)

8021 Ne 142nd Ave

Vancouver, Wa 98682

Hours: M-F 9am-5pm

[RustylugParts.com](http://RustylugParts.com)

**7060 E. 21st Street  
Tucson, AZ 85710**

## **First Class**

**Jim Click Ford**

Sponsors the Tucson Chapter

Model A Ford Club of America

